

Dorval Qc Canada
JUNE 1, 2024

1 RULES

1.1 See the Royal St Lawrence Yacht Club Standing Sailing Instructions ([SSI](#)).

2 CHANGES TO SAILING INSTRUCTIONS

2.1 See the [SSI](#).

3 COMMUNICATIONS WITH COMPETITORS

3.1 See the [SSI](#).

4 CODE OF CONDUCT

4.1 See the [SSI](#).

5 SIGNALS MADE ASHORE

5.1 See the [SSI](#).

6 BOAT DEWEDDING

6.1 See the [SSI](#).

7 SCHEDULE OF RACES


7.1 Five races are scheduled.

7.2 The scheduled time of the warning signal for the first race is 10:00 AM.

7.3 No warning signal will be made after 3:00 PM.

8 CLASS FLAG

8.1 The Class flag are:

Laser 28	Numeral Pennant 1 
----------	---

9 RACING AREA

9.1 The racing area will be west of AD18 on Lake St Louis.

10 COURSES

10.1 The diagram below in *Quebec Open Laser 28 SI Addendum A – Course Layouts* shows the course, including the approximate angles between legs, the order in which marks are to be passed and the side on which each mark is to be left.

11 MARKS

11.1 The marks that may be used are as follows: yellow inflatable cylinders, orange tetrahedrons and orange balls.



QUEBEC OPEN LASER 28

Sailing Instructions (SI)

ROYAL ST LAWRENCE YACHT CLUB

12 THE START

- 12.1 See the [SSI](#).
- 12.2 A boat that does not start within 4 minutes after its starting signal will be scored *Did Not Start (DNS)* without a hearing. This changes RRS A5.1 and A5.2.

13 CHANGE OF THE NEXT LEG OF THE COURSE

- 13.1 See the [SSI](#).

14 THE FINISH

- 14.1 See the [SSI](#).

15 PENALTY SYSTEM

- 15.1 See the [SSI](#).

16 TIME LIMITS

- 16.1 The Race Time Limit (see RRS 35), and the Finishing Window are shown in the table below.

Mark 1 Time Limit	Race Time Limit	Finishing Window
<i>30 minutes</i>	<i>90 minutes</i>	<i>30 minutes</i>

- 16.2 The Target Time is 45 minutes.
- 16.3 See the [SSI](#).

17 HEARING REQUESTS

- 17.1 See the [SSI](#).

18 SCORING

- 18.1 See the [SSI](#).
- 18.2 One (1) race is required to be completed to constitute a series.
- 18.3 A boat's series score is the total of its race scores. This changes RRS A2.1.

19 SAFETY REGULATIONS

- 19.1 See the [SSI](#).

20 TRASH DISPOSAL

- 20.1 See the [SSI](#).

21 PRIZES

- 21.1 Prizes will be awarded at the RStLYC Annual Prize Giving Ceremony.

22 RISK STATEMENT

- 22.1 See the [SSI](#).

23 INSURANCE

- 23.1 See the [SSI](#).



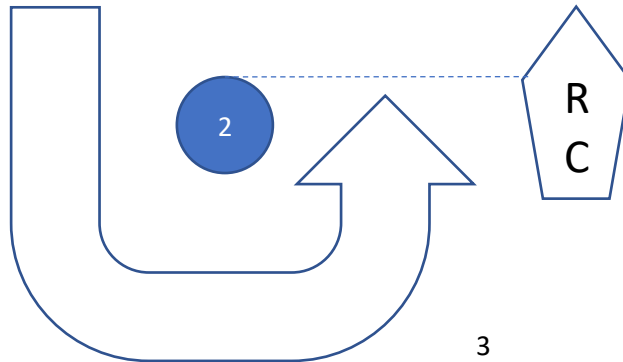
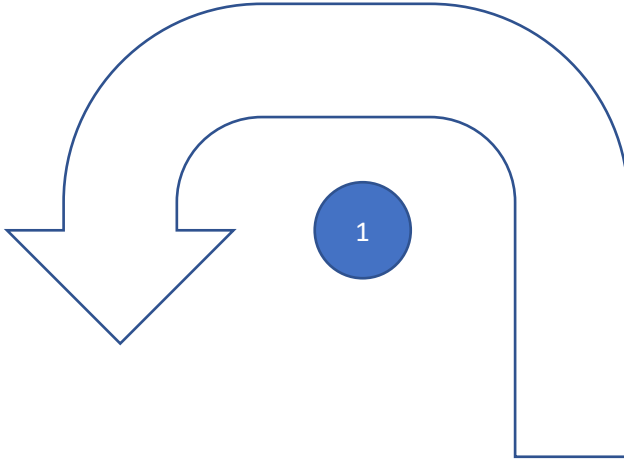
QUEBEC OPEN LASER 28

Sailing Instructions (SI)

ROYAL ST LAWRENCE YACHT CLUB

Annual Regatta SI ADDENDUM A – COURSE LAYOUTS

Start - 1 - 2 - 1 - Finish



Revision 1 – April 4th, 2024