



2021 Fostbite Open Series

The Royal St Lawrence Yacht Club

SAILING INSTRUCTIONS (SIs)

1 RULES

- 1.1 The event is governed by the rules as defined in *The Racing Rules of Sailing*.

2 CHANGES TO SAILING INSTRUCTIONS

- 2.1 Any change to the sailing instructions will be posted before 9:00 AM on the day it will take effect, except that any change to the schedule of races will be posted by 8:00 PM on the day before it will take effect.

3 COMMUNICATIONS WITH COMPETITORS

- 3.1 Notices to competitors will be posted on the official notice board located at <https://rstlyc.qc.ca/notice-of-race> .
- 3.2 On the water, the race committee intends to monitor and communicate with competitors on VHF radio channel 77.

4 SIGNALS MADE ASHORE

- 4.1 Signals made ashore will be displayed on the flag pole located in the centre of the RStLYC front lawn.
- 4.2 When flag AP is displayed ashore, '1 minute' is replaced with 'not less than 60 minutes' in Race Signals AP.

5 SCHEDULE OF RACES

5.1

Date	Schedule	Start Time
October 3	Racing	10:00 AM
October 10	Racing	10:00 AM
October 17	Racing	10:00 AM
October 24	Racing	10:00 AM
October 24	Awards	5:00 PM

- 5.2 The scheduled time of the warning signal for the first race each day is 10:00 AM
- 5.3 To alert boats that a race or sequence of races will begin soon, the orange starting line flag will be displayed one minute before a warning



signal is made.

5.4 No warning signal will be made after 3:00 PM .

6 CLASS FLAGS

6.1 The class flags are:

Class	Description	Rating	Class Flag
Laser 28	One Design	-	Red Laser 28 insignia on White Background
PHRF \geq 0.98	SLVYRA, White Sail	T/T Rating \geq 0.98	Numeral Pennant 1
PHRF $<$ 0.98	SLVYRA, White Sail	T/T Rating $<$ 0.98	Numeral Pennant 2
PHRF Sp.	Spinnaker	PHRF with spinnaker	Numeral Pennant 3

7 RACING AREA

7.1 SI Addendum A shows the location of the racing area, west of AD 18 on Lake St Louis.

8 COURSES

8.1 SI Addendum B shows the course(s), including the approximate angles between legs, the order in which marks are to be passed, and the side on which each mark is to be left

8.2 No later than the warning signal, the race committee signal vessel will display the course to be sailed.

9 MARKS

9.1 Marks 1, 2A, 2B are yellow inflatable cylinders. The starting mark is a round orange mooring ball.

10 THE START

10.1 Races will be started using RRS 26 with the warning signal made 5 minutes before the starting signal.

10.2 The starting line is between a staff displaying an orange flag on the Race Committee vessel at the starboard end and the course side of the port-end starting mark.

10.3 Boats whose warning signal has not been made shall avoid the starting



area during the starting sequence for other races.

- 10.4 A boat that does not start within 4 minutes after her starting signal will be scored Did Not Start without a hearing. This changes RRS A5.1 and A5.2.

11 CHANGE OF THE NEXT LEG OF THE COURSE

- 11.1 To change the next leg of the course, the race committee will move the original mark or the finishing line to a new position.

12 THE FINISH

- 12.1 The finishing line is between a staff displaying a blue flag on Race Committee vessel and the course side of the finishing mark.
- 12.2 If the race committee is absent when a boat finishes, she shall report her finishing time, and her position in relation to nearby boats, to the race committee at the first reasonable opportunity.

13 TIME LIMITS [AND TARGET TIMES]

- 13.1 The Mark 1 Time Limit, Race Time Limit (see RRS 35), and the Finishing Window are shown in the table below.

Mark 1 Time Limit	Race Time Limit	Finishing Window
60 minutes	90 minutes	45 minutes

- 13.2 If no boat has passed the first mark within the Mark 1 Time Limit, the race will be abandoned.
- 13.3 The Finishing Window is the time for boats to finish after the first boat sails the course and finishes. Boats failing to finish within the Finishing Window, and not subsequently retiring, penalized or given redress, will be scored Time Limit Expired (TLE) without a hearing. A boat scored TLE shall be scored points for the finishing place one more than the points scored by the last boat that finished within the Finishing Window. This changes RRS 35, A5.1, A5.2 and A10.
- 13.4 Failure to meet the Target Time will not be grounds for redress. This changes RRS 62.1(a).

14 HEARING REQUESTS

- 14.1 The protest time limit is 60 minutes after the last boat finishes the last race of the day or the race committee signals no more racing today, whichever is later.
- 14.2 Hearing request forms are available at <https://rstlyc.qc.ca/notice-of->



[race](#) .

15 SCORING

- 15.1 The scoring system is as per RRS Appendix A2, except as modified below:
- 15.2 3 races are required to be completed to constitute a series.
- 15.3 (a) When fewer than 5 races have been completed, a boat's series score is the total of her race scores.
(b) When from 5 to 9 races have been completed, a boat's series score is the total of her race scores excluding her worst score.
(c) When 10 or more races have been completed, a boat's series score is the total of her race scores excluding her two worst scores.
- 15.4 Rule A5.3 applies.

16 SAFETY REGULATIONS

- 16.1 A boat that retires from a race shall notify the race committee at the first reasonable opportunity.

17 TRASH DISPOSAL

- 17.1 Trash may be placed aboard official vessels.

18 PRIZES

- 18.1 Prizes will be awarded at the RStLYC Sailing Prizegiving, November 6th.

19 RISK STATEMENT

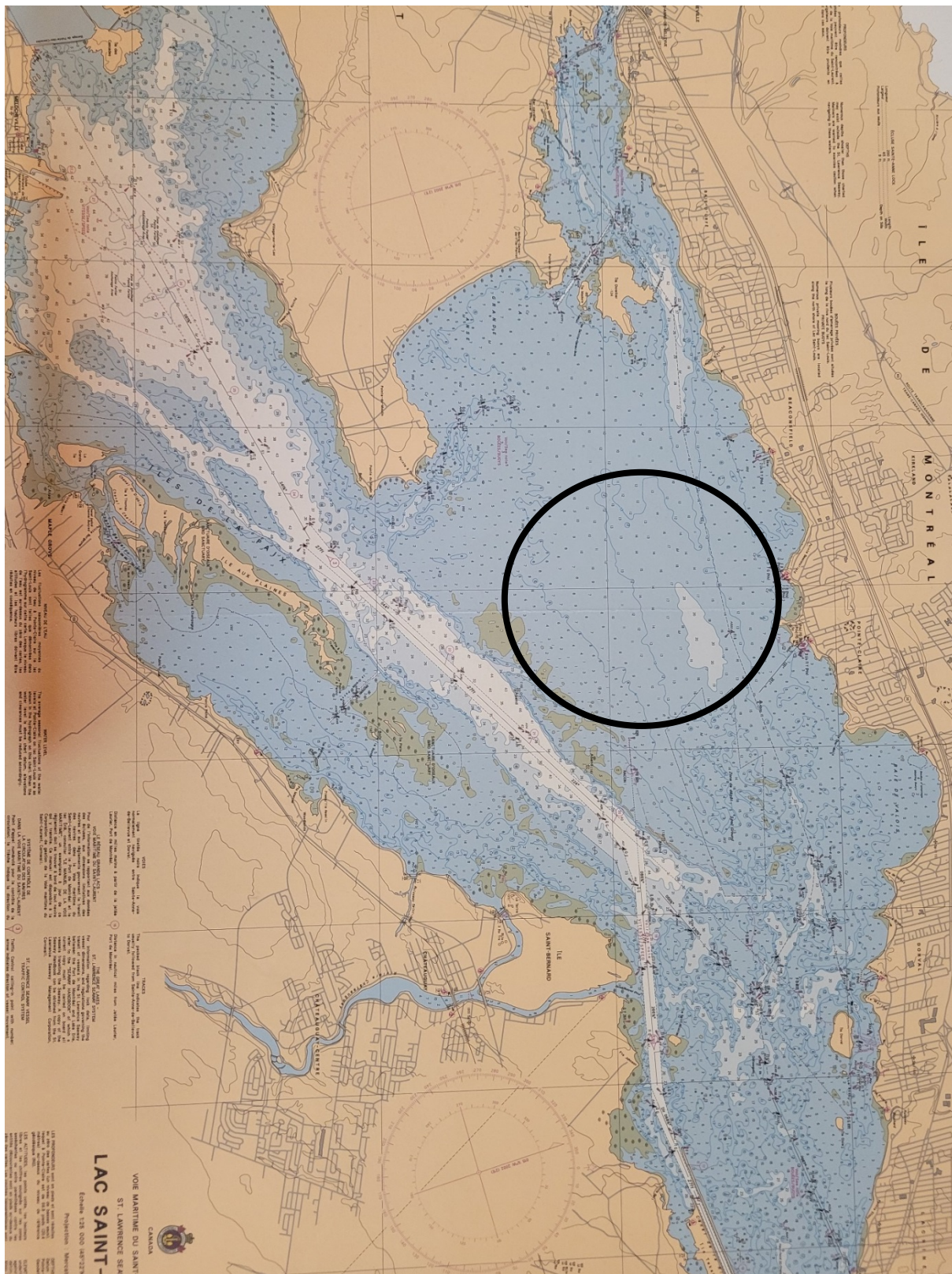
- 19.1 RRS 3 states: 'The responsibility for a boat's decision to participate in a race or to continue to race is hers alone.' By participating in this event each competitor agrees and acknowledges that sailing is a potentially dangerous activity with inherent risks. These risks include strong winds and rough seas, sudden changes in weather, failure of equipment, boat handling errors, poor seamanship by other boats, loss of balance on an unstable platform and fatigue resulting in increased risk of injury.
Inherent in the sport of sailing is the risk of permanent, catastrophic injury or death by drowning, trauma, hypothermia or other causes.

20 INSURANCE

- 20.1 Each participating boat shall be insured with valid third-party liability insurance with a minimum cover of \$2,000,000.00 per incident or the equivalent.



SI ADDENDUM A





SI ADDENDUM A

Course	Description	
	Windward/Leeward with Downwind finish	
	Possible courses	
	Signal	Mark Rounding Order
	L1	Start-1-Finish
	L2	Start-1-2s/2p-1-Finish
L3	Start-1-2s/2p-1-2s/2p-1-Finish	