



PAS-de-DEUX RACE

(Pursuit Start)

Saturday, October 2, 2021

11 h 00

SAILING INSTRUCTIONS

1. RULES

- 1.1. The event is governed by the rules as defined in The Racing Rules of Sailing.
- 1.2. If there is a conflict between languages, the English text takes precedence.
- 1.3. All competitors must be familiar with the most recent COVID-19 protocols related to sailing.
- 1.4. All competitors are responsible for deciding whether to participate or not, and for compliance with all applicable rules, including all COVID regulations and guidelines.
- 1.5. There shall be no more than 2 active crewmembers on board each boat – extra persons may be carried as passengers (strongly discouraged) but must not take part in the workings of the boat other than in an emergency.
- 1.6. This is a white sail race. No spinnakers shall be flown. **Single-handed boats are eligible!**

2. CHANGES TO SAILING INSTRUCTIONS

- 2.1. Any changes to the Sailing Instructions will be emailed by the PCYC Fleet Captain to all participants and Race Committee by 20h00 Friday, October 1, 2021.

3. COMMUNICATION WITH COMPETITORS

- 3.1. From the first warning signal until the end of the race, except in an emergency or if abandoning her race, a boat shall not make voice or data transmissions and shall not receive voice or data communication that is not available to all boats.

4. ELIGIBILITY AND ENTRY

- 4.1. The event is open to all keelboats.
- 4.2. All boats must have a SLVYRA handicap and must be registered on the SLVYRA website.
- 4.3. Entry in this event is limited to members of recognized clubs and organizations.
- 4.4. All participating boats shall register by emailing pcycfleetcaptain@yahoo.com by 21h00 Thursday, September 30, stating:

Brad Butterworth (your name)

Kookaburra (your boat name)

Mirage 24 (your boat type)

8442 (your sail number)

249 (your SLVYRA white sail **VB T/D** handicap, that you can obtain on the SLVYRA website)

- 4.5. Boats will be handicapped according to PHRF T/D rating. If a boat does not have a valid handicap, the organizing committee will assign a provisional handicap for this race. In order to simplify the assignment of start times, some boats may be grouped for the start. The decision of the race committee will be final.
- 4.6. The PCYC Fleet Captain will reply with your Start Time on the Friday prior to the race.
- 4.7. On-the-water late entrants may be accepted and assigned start times entirely at the Race Committee's discretion.

5. CODE OF CONDUCT

- 5.1. Competitors shall comply with reasonable requests from race officials.

6. SIGNALS MADE ASHORE

- 6.1. Signals made ashore will be displayed on the flagpole of the host club (PCYC).
- 6.2. The host club Race Committee will communicate these signals to its neighbour clubs by cellphone and/or VHF Channel 68, so that the same signals can be displayed at each club.
- 6.3. When flag AP is displayed ashore, "1 minute" is replaced with "not less than 30 minutes" in the race signal AP.

7. SCHEDULE OF RACES

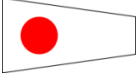

- 7.1. There will be only one race.
- 7.2. The scheduled time of the warning signal for the race is 11h00.
- 7.3. No race will be started after 15h00.

8. CLASS FLAG

- 8.1. The class flag is GREEN.

9. RACE COURSES

- 9.1. There are two (2) possible race courses of equal length. The same SLVYRA marks are used by each course but the sailing direction is reversed (See Appendix-1).
- 9.2. The Race Committee will select the most favorable course based on the wind direction.
- 9.3. Prior to the warning signal, a numeral pennant will be displayed on the Race Committee boat to indicate which course has been selected:

COURSE #	FLAG DISPLAYED	NAVIGATION
1		Start at 32 – 34P – 44P – 33S – 43P – 31P – Finish at 32
2		Start at 32 – 31S – 43S – 33P – 44S – 34S – Finish at 32

10. MARKS

- 10.1. The racing marks have been selected from the current SLVYRA racing mark chart (See Appendix 1)

11. THE START

- 11.1. Prior to the warning signal, all competitors shall sail by the stern of the race committee boat hailing their sail number and start time. **Ex: “eight four four two, one minute fifteen seconds”**
- 11.2. Your start time (delay) is the number of seconds or minutes, following the **start signal**, that your boat should cross the starting line.
- 11.3. The starting line is between a staff displaying an orange flag on the race committee boat at the starboard end and the course side of the SLVYRA mark #32 at the port end.
- 11.4. In the event that any boat(s) crosses the start line prior to their assigned starting time, one sound signal (horn) will be heard and code flag “X” will be flown. The over-early boat must return and round either end of the starting line before restarting their race. This changes RRS 29.1.

12. THE FINISH

- 12.1. The finishing line is between a staff displaying a blue flag on the race committee boat and the course side of SLVYRA mark #32.

13. TIME LIMITS

- 13.1. The Finishing Window is 40 minutes; the time for boats to finish after the first boat sails the course and finishes.
- 13.2. Boats failing to finish within the Finishing Window will be scored Time Limit Expired (TLE).

14. HEARING REQUEST

14.1. There will be no protest hearings arising from this fun and friendly race.

15. SCORING

15.1. The first boat over the finish line having successfully completed the course shall be the winner.

15.2. Further positions shall be awarded to all boats in the order they finish the race.

15.3. High point scoring system will be used so that the clubs with the most finishers get more points.

15.4. These points will count towards the respective Yacht Club's total score for the ultimate prize.

16. SAFETY REGULATIONS

16.1. Single-handed racers shall wear a Personal Flotation Device.

16.2. A boat that retires from a race shall notify the race committee at the first reasonable opportunity.

16.3. On the water, the race committee intends to monitor VHF radio channel 68.

17. PRIZES

17.1. A prize will be awarded to the first place finisher.

17.2. The Lac St-Louis Pas-de-Deux trophy will be awarded to the winning Yacht Club with the most points.

18. RISK STATEMENT

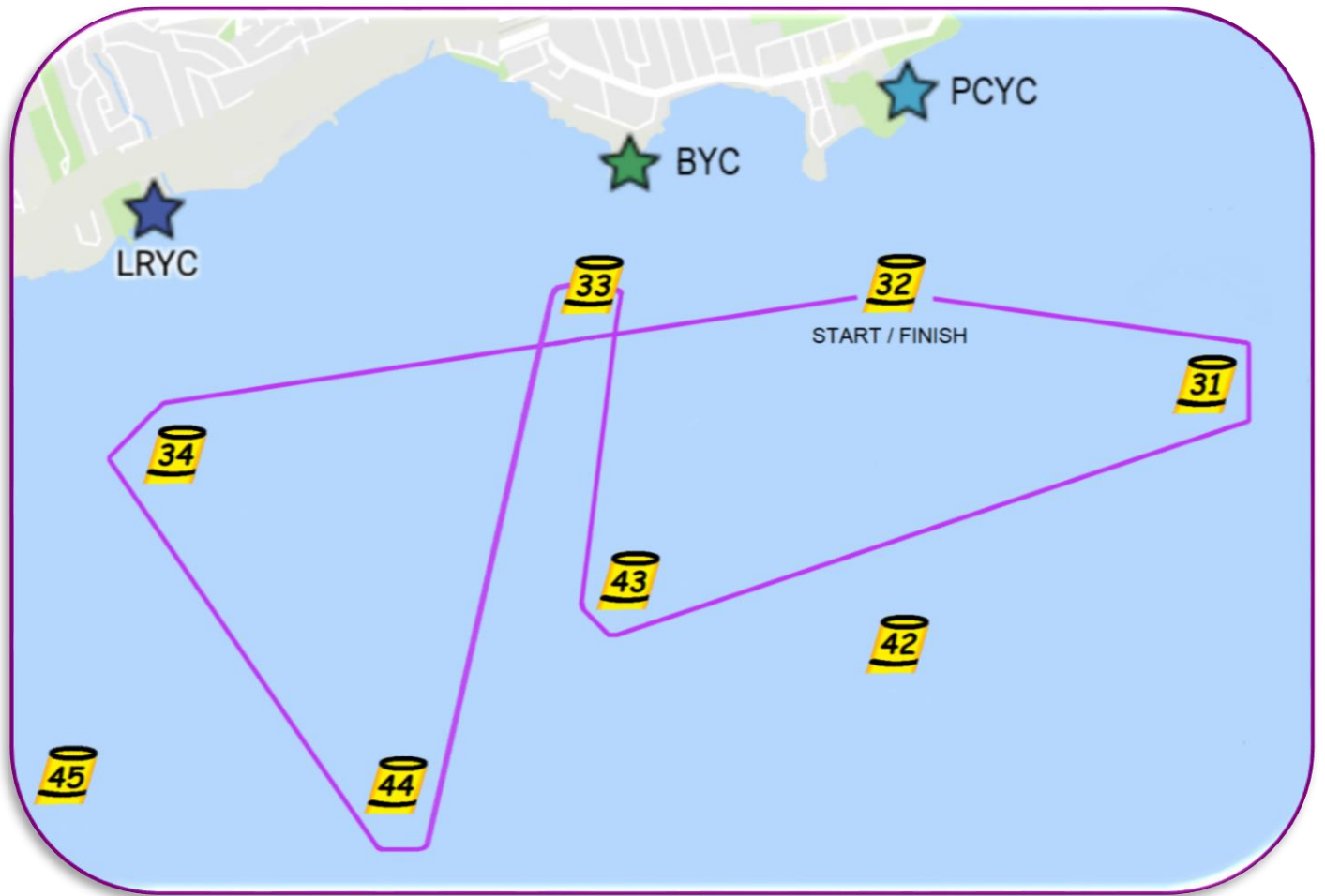
18.1. The responsibility for a boat's decision to participate in a race or to continue to race is hers alone. By participating in this event each competitor agrees and acknowledges that sailing is a potentially dangerous activity with inherent risks. These risks include strong winds and rough seas, sudden changes in weather, failure of equipment, boat handling errors, poor seamanship by other boats, loss of balance on an unstable platform and fatigue resulting in increased risk of injury. Inherent in the sport of sailing is the risk of permanent, catastrophic injury or death by drowning, trauma, hypothermia or other causes.

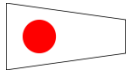
21. INSURANCE

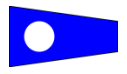
21.1. Each participating boat shall be insured with valid third-party liability insurance with a minimum cover of \$1,000,000 CAD per incident or the equivalent.

APPENDIX – 1

THE RACE COURSES



Course – 1	Bearing (°M)	Distance (nm)
		
32 to 34	275°	1.77
34 to 44	159°	0.97
44 to 33	037°	1.12
33 to 43	186°	0.55
43 to 31	088°	1.41
31 to 32	301°	0.72

Course – 2	Bearing (°M)	Distance (nm)
		
32 to 31	121°	0.72
31 to 43	268°	1.41
43 to 33	006°	0.55
33 to 44	217°	1.12
44 to 34	339°	0.97
34 to 32	095°	1.77

Total distance: 6.54 nm